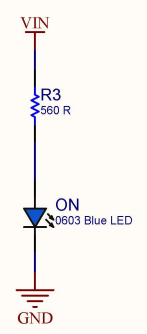
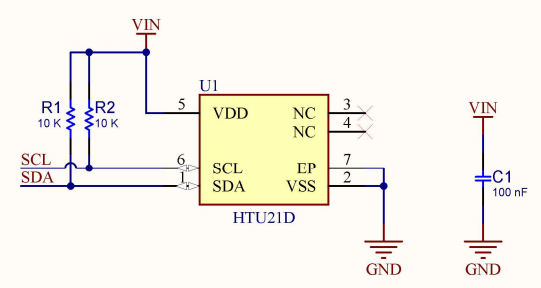


By default "VCC SEL"
jumper is shorted to the 3V3

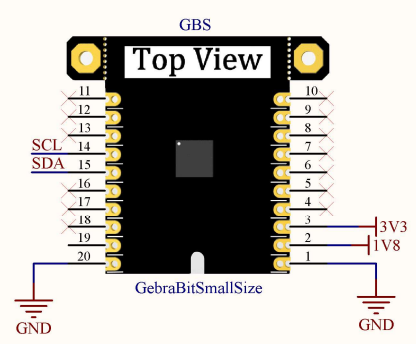
VCC SEL



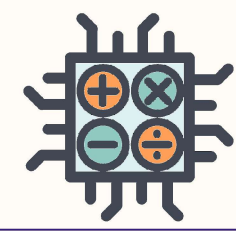
POWER LED



HTU21D



GEBRABIT PINOUT



GebraBit		
HTTPS://GEBRABIT.COM/		
Title: GebraBit HTU2xD Schematics		Variant: [No Variations]
Page Contents: GebraBit HTU2xD Circuits		Checked by: R.A
Size: SMALL	SKU CODE: GB620EN	Revision: V2.0
Date: 06/07/2023	Designed by: GEBRABIT	Sheet 1 of 1