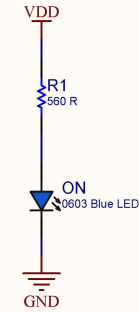
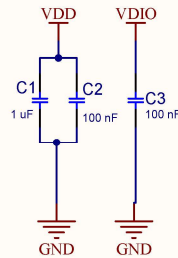
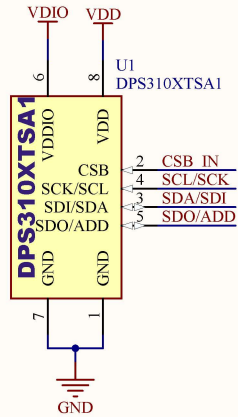


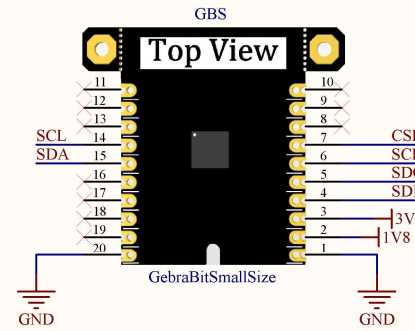
POWER SEL



POWER LED

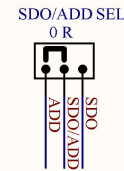
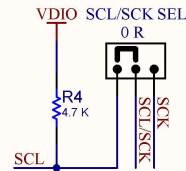
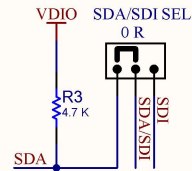
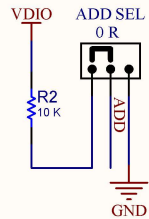
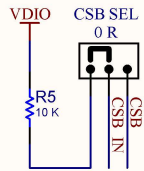


DPS310XTSA1

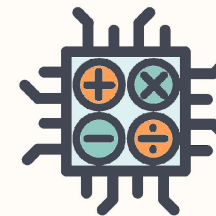


GEBRABIT PINOUT

I2C IS SELECTED BY DEFAULT



PROTOCOL SELECTOR



GebraBit		
HTTPS://GEBRABIT.COM/		
Title: GebraBit DPS310XTSA1 Schematics		Variant: [No Variations]
Page Contents: GebraBit DPS310XTSA1 Circuits		Checked by: R.A
Size: SMALL	SKU CODE: GB637EN	Revision: V2.0
Date: 05/29/2023	Designed by: GEBRABIT	Sheet 1 of 1