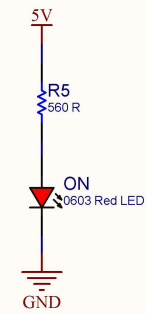
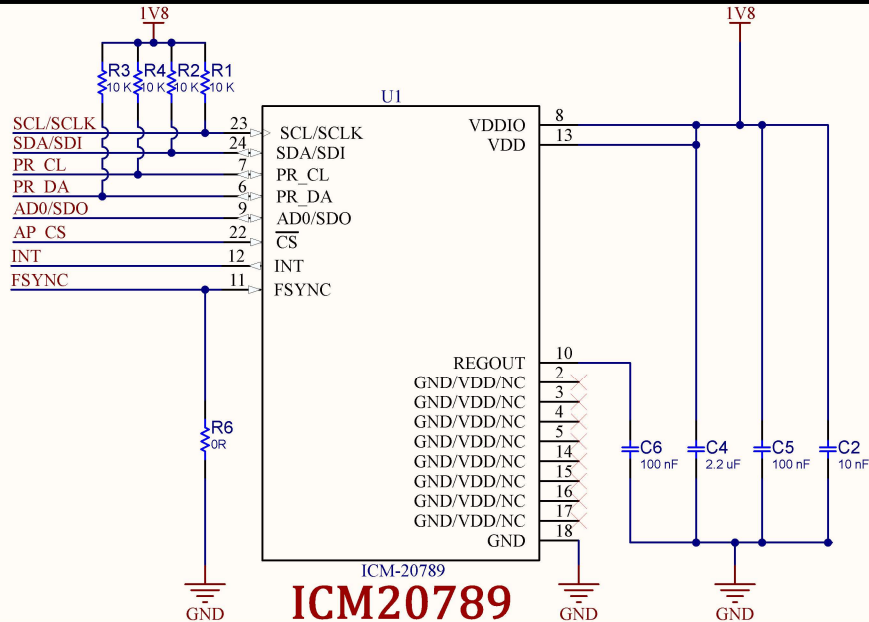


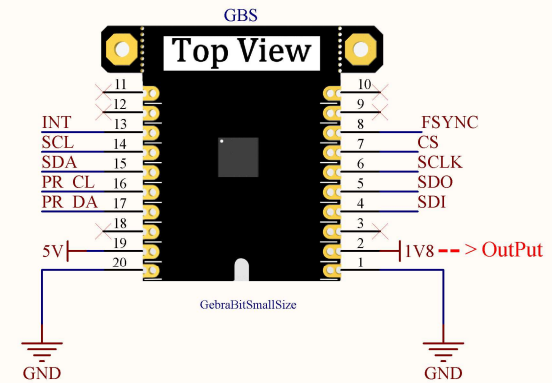
POWER



POWER LED

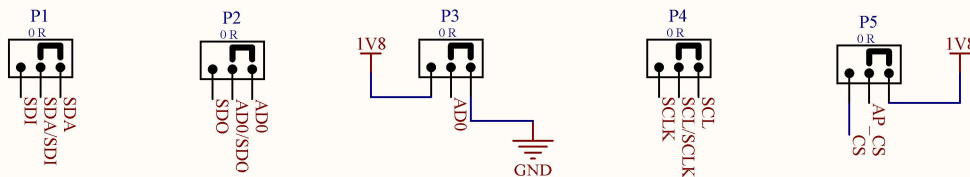


ICM20789



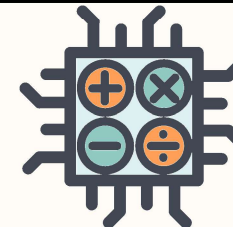
GEBRABIT PINOUT

I2C IS SELECTED BY DEFAULT



WHEN SPI IS SELECTED R1&R2 MUST NOT BE ASSEMBLED

PROTOCOL SELECTOR



GebraBit
[HTTPS://GEBRABIT.COM/](https://gebrabit.com/)

Title: GebraBit ICM20789 Schematics		Variant: [No Variations]	
Page Contents: GebraBit ICM20789 Circuits		Checked by: M.Z	
Size: Small	SKU CODE: GB307IM	Revision: V2.0	
Date: 10/03/2022	Designed by: GEBRABIT	Sheet 1	of 1